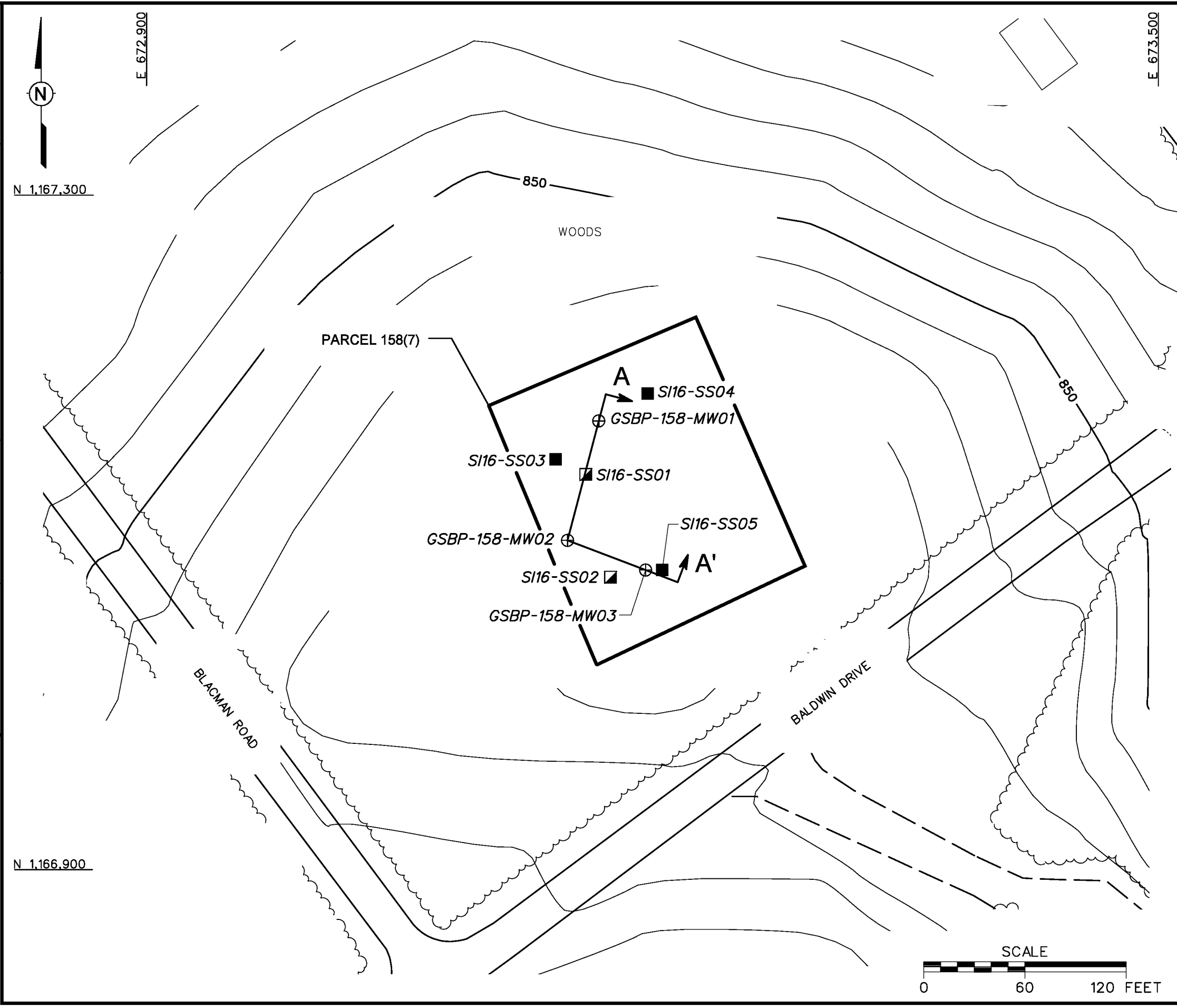


DBILLING
c:\cadd\design\783149.es,181
07/05/01 08:15:07 AM
STARTING DATE: 04/23/01
DRAWN BY: D. BOMAR
DATE LAST REV.:
ENGR. CHK. BY: S. MORAN
DRAFT. CHK. BY:
INITIATOR: T. WINTON
DWG. NO.: ...783149.es,181
PROJ. NO.: 783149



LEGEND

- UNIMPROVED ROADS AND PARKING
- PAVED ROADS AND PARKING
- BUILDING
- TOPOGRAPHIC CONTOURS (CONTOUR INTERVAL - 5 FOOT)
- TREES / TREELINE
- PARCEL BOUNDARY
- SURFACE AND SUBSURFACE SOIL SAMPLE LOCATION
- SURFACE SOIL SAMPLE LOCATION
- RESIDUUM MONITORING WELL LOCATION
- CROSS SECTION LOCATION

FIGURE 3-1
SAMPLE LOCATION MAP
GROUND SCAR AT SOUTH END
OF CONFIDENCE COURSE
PARCEL 158(7)
U. S. ARMY CORPS OF ENGINEERS
MOBILE DISTRICT
FORT McCLELLAN
CALHOUN COUNTY, ALABAMA
Contract No. DACA21-96-D-0018

IT CORPORATION
A Member of The IT Group

